

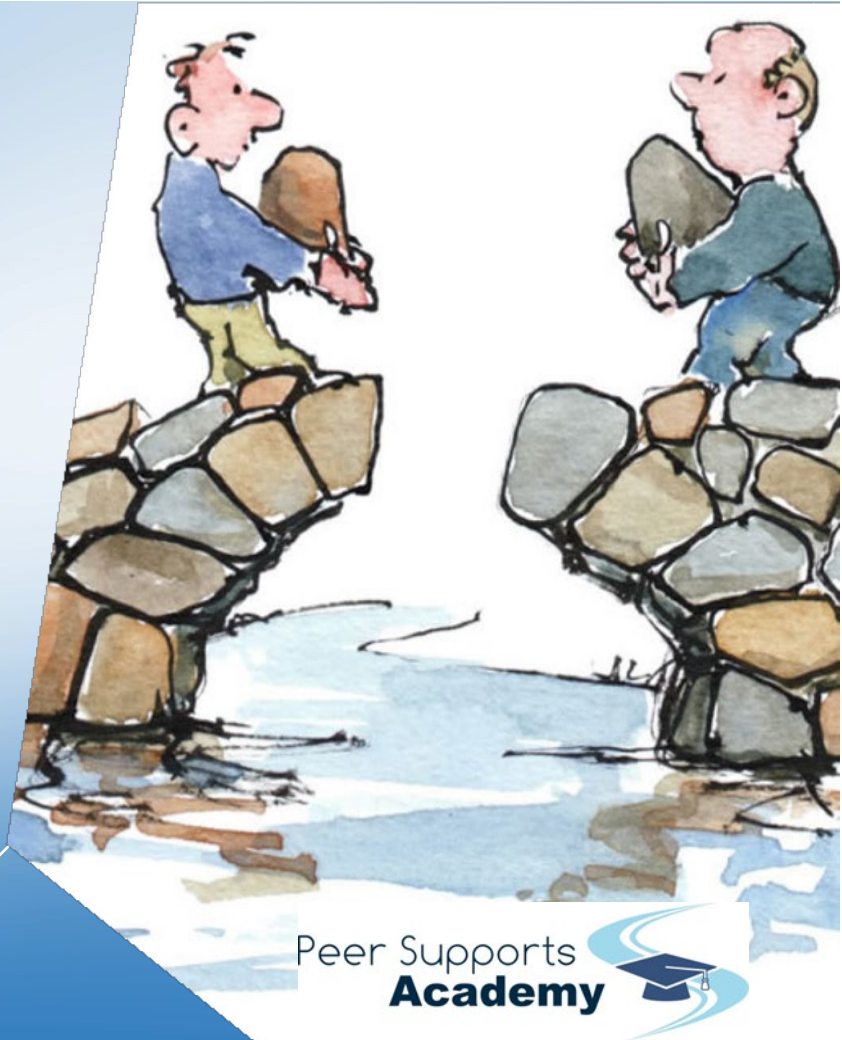
FORENSIC PEER SUPPORT SPECIALIST TRAINING PROGRAM

*A Forensic Peer works to remove
barriers and obstacles by serving as a
personal guide and role model to people
with criminal justice involvement*



Forensic Peer Support Specialist Training Modules

1. Introduction to Forensic Peer Support
2. Supporting Positive Engagement in the CJS
3. Advocating for Clients
4. Barriers to Employment and Housing
5. Action Plans and Goal Setting Skills
6. Inspire Hope and Change
7. Life Skills
8. Motivational interviewing
9. Professional Ethics for Forensic Peers
10. Person Centered - Trauma Informed



Holistic person-centered, strength-based support offered to individuals with psychiatric and/or co-occurring challenges, involved in the Criminal Justice System, from initial contact with law enforcement through re-entry into the community from incarceration. The Forensic Peer Support Specialist program is based on the Sequential Intercept Model (SIM) which identifies strategic and effective intercept points which peer support can utilize to provide timely and appropriate interventions.



Module One:

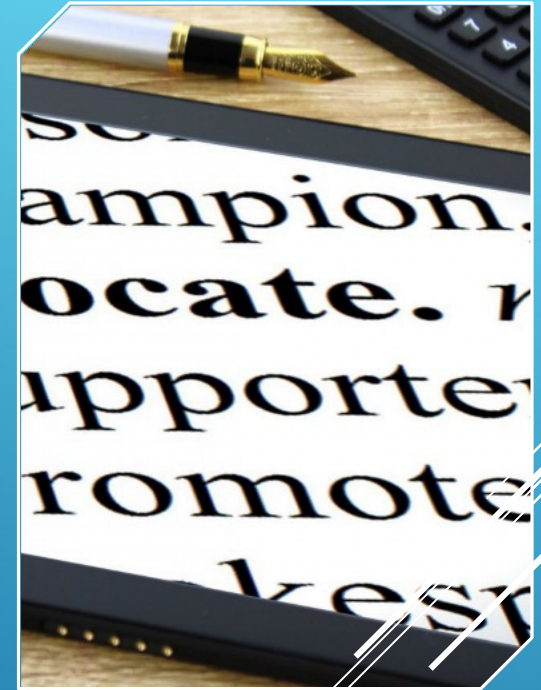
INTRODUCTION TO FORENSIC PEER SUPPORT

Module Two: SUPPORTING POSITIVE ENGAGEMENT IN THE CJS

This module provides effective tools on how to supporting positive engagement with the criminal justice system while not attempting to enforce compliance. Forensic Peer Support Specialists provide aid, support, and motivation for meeting mandates and goals. Peer mentors are not agents of the criminal justice system, and do not act as “compliance officers,” or “junior probation officers.” Utilizing their own success and Motivational Interviewing, Forensic Peer Support Specialists seek to leverage their own experience and provide inspiration and hope.

Forensic Peers act as advocates for clients at the individual and systems levels. Forensic Peers support clients in being cognizant of their rights and responsibilities. They advocate for their clients within the standards of compliance by being willing to consult with probation/parole and other mandated programs.

Module Three: ADVOCATING FOR CLIENTS



Obtaining employment and housing is a crucial re-entry service and is oftentimes foremost in an individual's thoughts. Multiple barriers and challenges must be considered when helping an individual prepare for employment and/or housing.



Module Four: BARRIERS TO EMPLOYMENT AND HOUSING

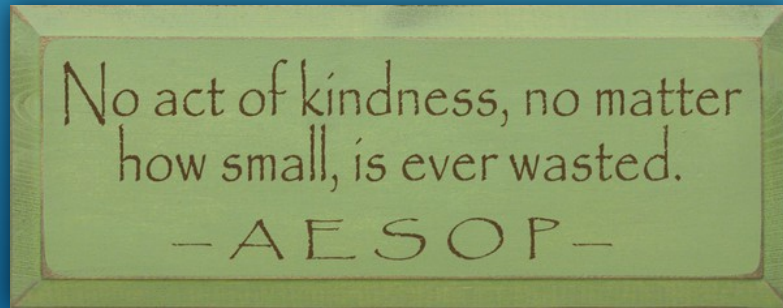
Module Five: ACTION PLANS AND GOAL SETTING SKILLS

Using an Action Plan based on setting small, easily achievable goals and removing barriers blocking the client's path to recovery.



Forensic Peers act as credible role models to individuals transitioning from criminal activity to prosocial behaviors. They inspire hope and the possibility of positive change through appropriate self-disclosure of their own histories, by consistently modeling recovery behaviors, and being a continual role model in recovery from addiction and crime.

Module Six: INSPIRING HOPE AND CHANGE



Module Seven: LIFE SKILLS

Knowing and being able to pass on these skills is a crucial component to any Forensic Peer.



- Effective Coping Skills
- Social Skills
- Developing a Social Network
- Developing Leisure and Recreational Activities
- Living a Healthy Lifestyle
- Effective Communication
- Stress Management
- Money Management

Module Eight: MOTIVATIONAL INTERVIEWING

Forensic Peers utilize motivational interviewing to help people resolve ambivalent feelings and insecurities to find the internal motivation they need to change their behavior. It is a practical, empathetic, and short-term process that takes into consideration how difficult it is to make life changes.

Four Key Principles of MI

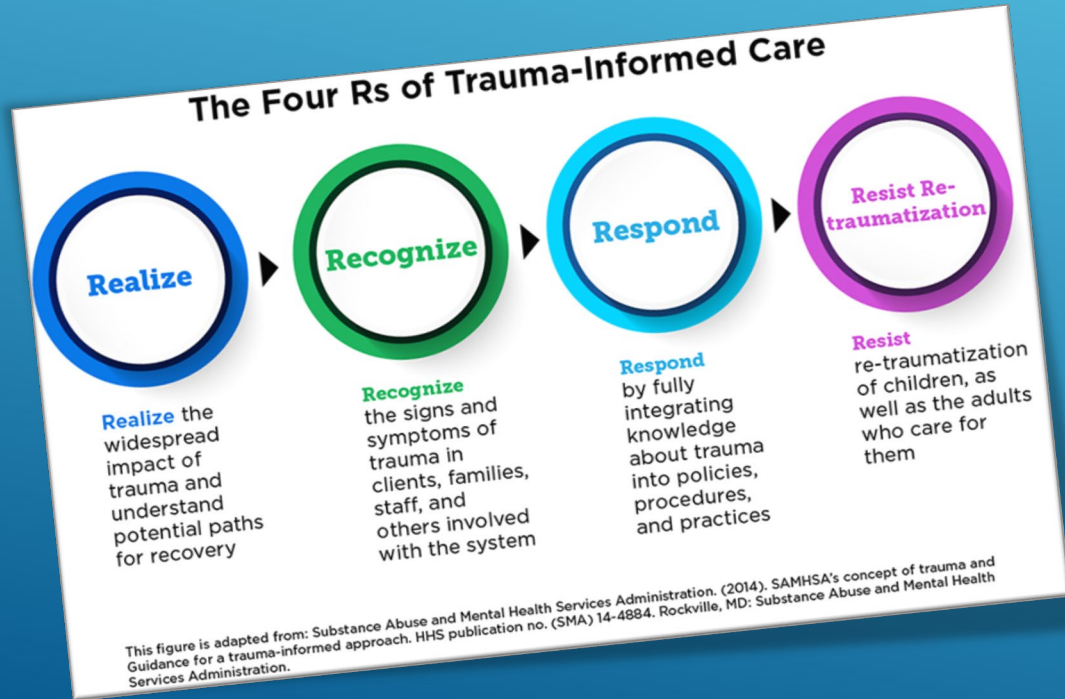


Module Nine: PROFESSIONAL, ETHICAL AND LEGAL GUIDELINES

Forensic Peers adhere to professional, ethical and legal guidelines. They maintain boundaries and resist the temptation to collude with individuals against the system, especially in the face of perceived or actual injustice. Similarly, they do not collude with the system against the individual, or act as an agent of the system ("Junior probation officer").



Forensic Peers utilize trauma informed and person centered approaches to providing peer support.



Module Ten: PERSON CENTER / TRAUMA INFORMED PEER SUPPORT